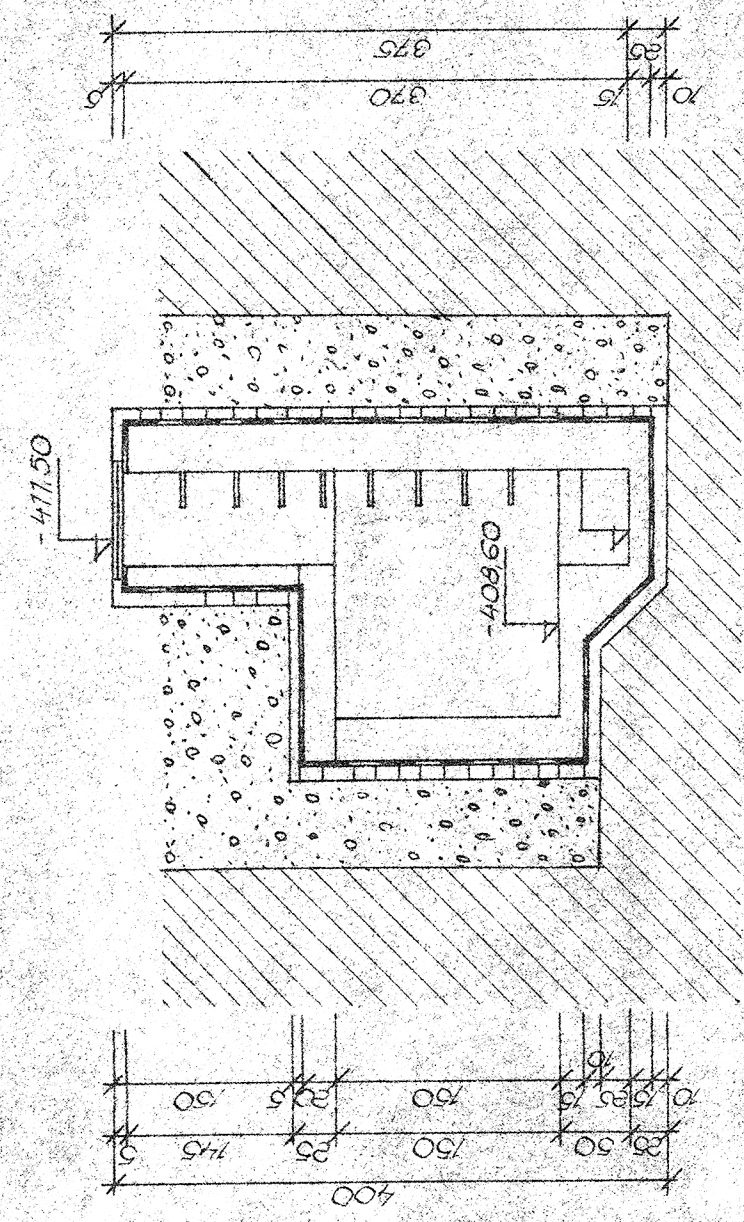
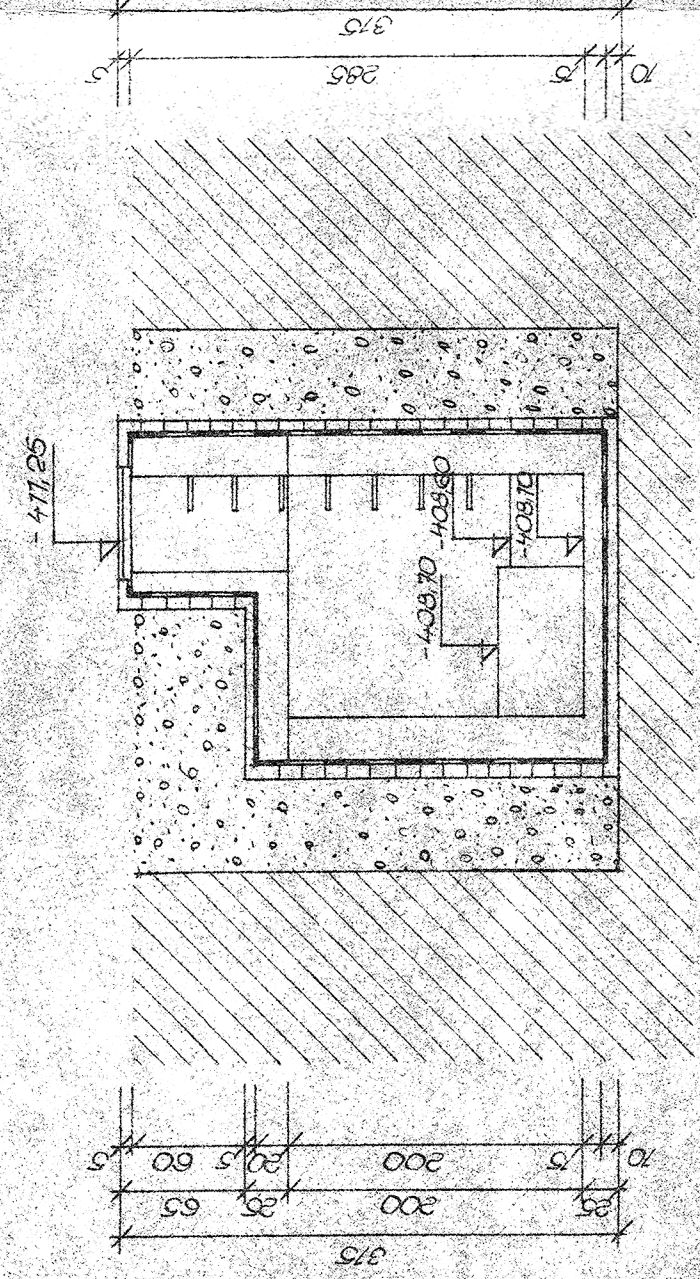


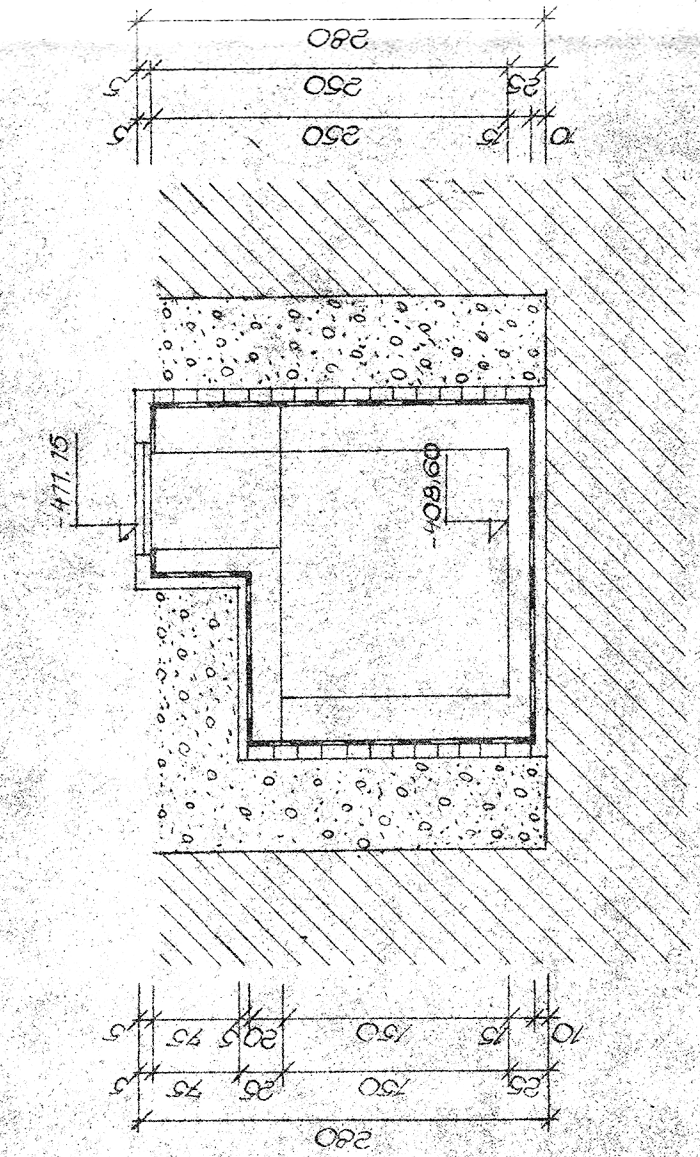
REZ 2-2 11 1:50



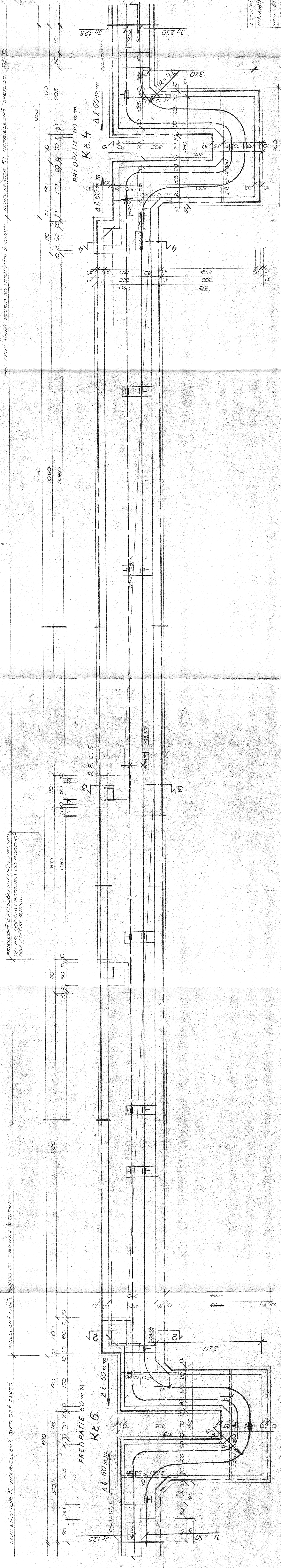
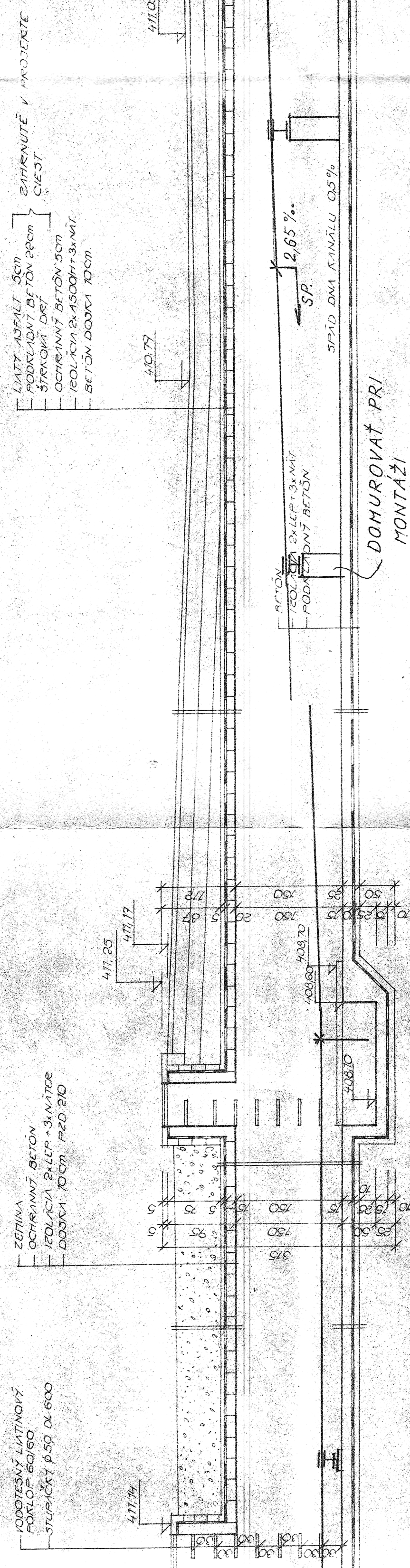
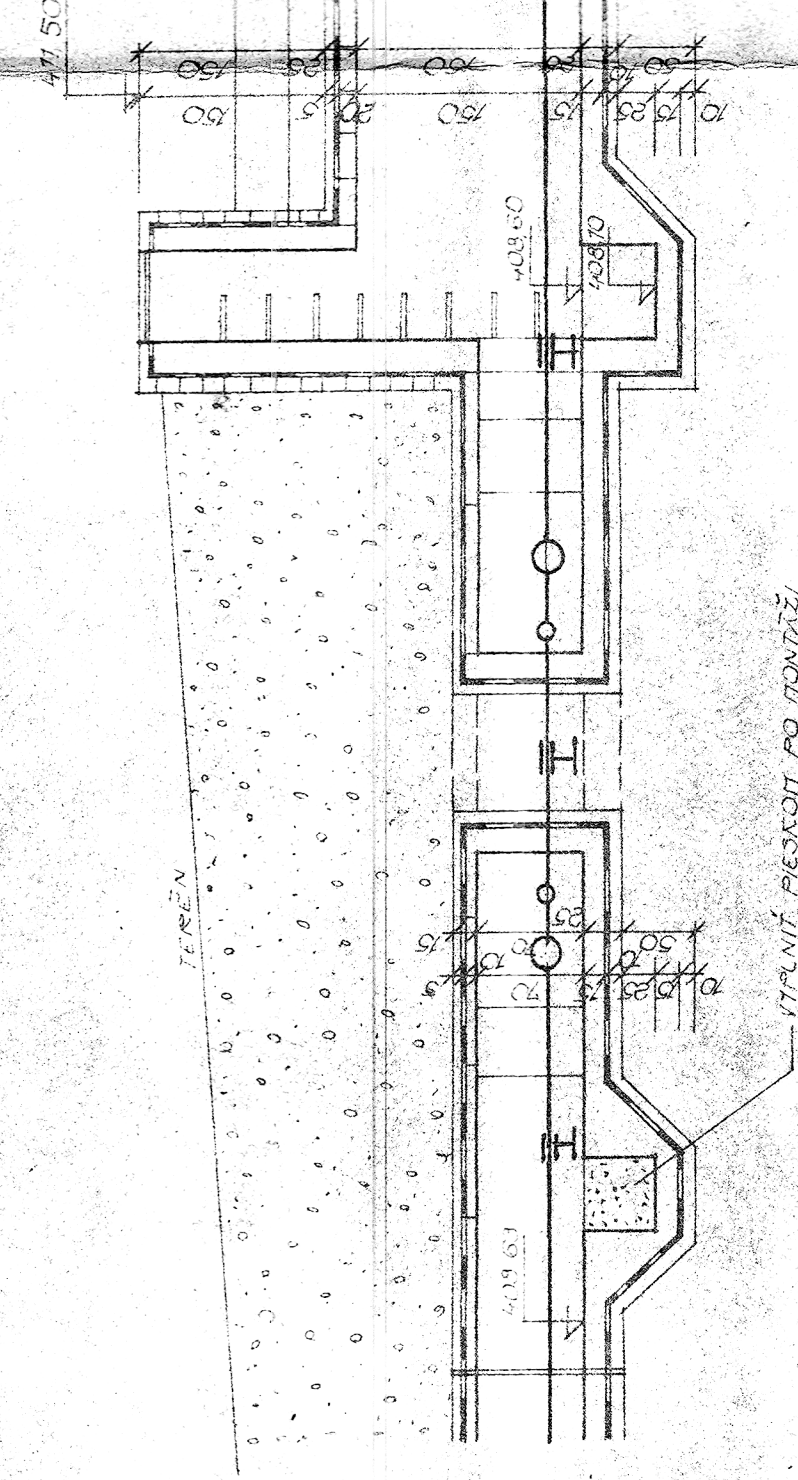
REZ 3-3 n 1:50



REZ 4-4 П 1:50



REZ POZDĚNÝ 1-1 N 1:50



POZNÁMKA:

PAROVOD UPEVNIT NA

VÁLEČKOVÉ POSUVNÉ ULOŽENIE

$$l = 5.6 \text{ m}$$

— PARA 8 atp - 200°C

— KONDENZAT

[illegible]